



HORIZON REALTY
REVELSTOKE

Carl Rankin Personal Real Estate Corporation

102 - 217 Mackenzie Avenue
Revelstoke, BC
V0E 2S0

Toll free : 1.877.837.2250

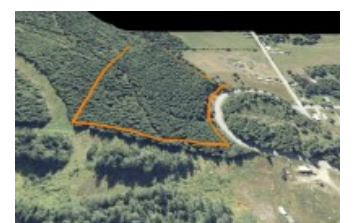
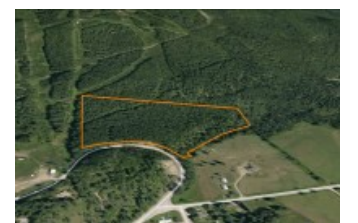
Phone : 250.837.2251

Mobile : 250.837.8746

Fax : 1.866.385.2013

Email : crankin@coldwellbanker.ca

17.85 Acres of Prime Development Land adjacent to Revelstoke Mountain Resort



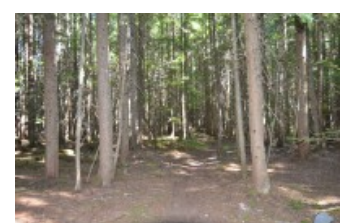
Details

Price: 1975000

MLS®: 10034659

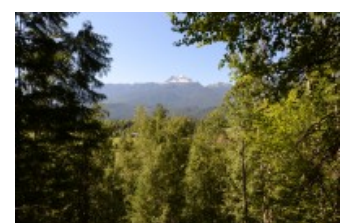
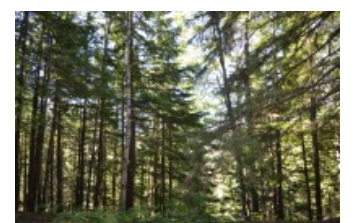
Est. Property Tax: 5574.00

Lot Size Area: 17.85 Acres

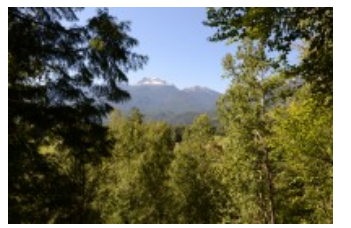


Description

This highly attractive Development acreage is located directly adjacent to Revelstoke Mountain Resort's village core base lands and a future lower mountain chair lift, and the top acreage boundary backs onto lower mountain ski runs. Left boundary of this property is the Revelstoke Municipal Boundary line. Property is non-ALR and is currently zoned CR (country residential). This could be a current estate lot development site or a future rezoned higher density residential subdivision site. It is the only Development Acreage, currently available, with direct connection to the Revelstoke Mountain Resort base village area.



Location







Scan the code above with your mobile device to go directly to the Carl Rankin Personal Real Estate Corporation website for 17.85 Acres of Prime Development Land adjacent to Revelstoke Mountain Resort